

Control-M

Managed File Transfer and Managed File Transfer/Enterprise

Product description

Control-M Managed File Transfer (MFT) helps you reduce risk and deliver business services faster by orchestrating file transfers alongside related application workflows, whether on-premises, in the cloud, or in hybrid environments.

Business challenge

Modern business operations depend on the movement of files between many different applications, across modern multi-cloud infrastructures. Using separate products to manage file transfers and application workflows requires scripting and manual intervention, which creates unnecessary risk and potential service level agreement (SLA) breaches that can negatively impact service delivery.

BMC solution

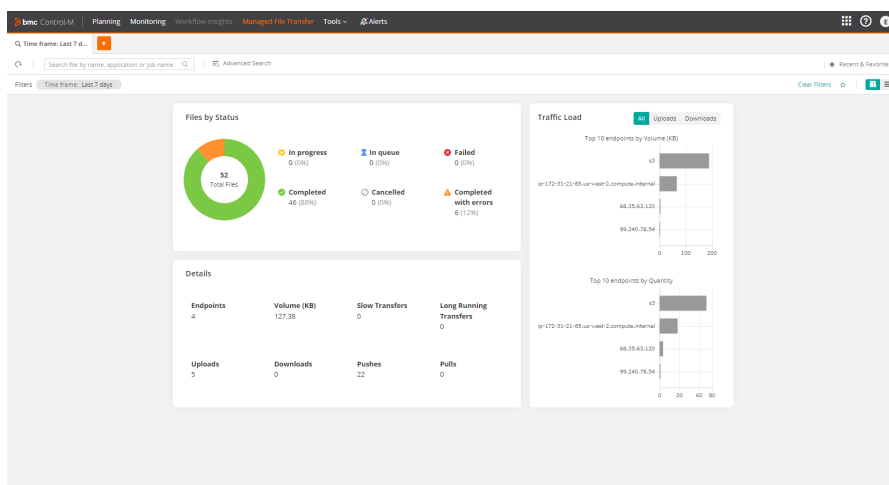
Managed File Transfer gives you instant visibility into the status of file transfers with a dashboard view and extensive file transfer search options, reducing the risk of downtime with automated recovery features. It lets you orchestrate file transfers alongside related application and data workflows, improving the performance of your business services.

MANAGED FILE TRANSFER OPTIONS

- **Managed File Transfer** manages file transfers initiated from within the Control-M environment
- **Managed File Transfer/Enterprise** adds functionality to manage file transfers initiated outside the Control-M environment, so you can exchange files with external business partners

KEY FEATURES

- **Securely automate** enterprise file transfers, maintain data integrity, and provide a single view of all application and data workflow activity
- **Centralize and automate** the management of file transfers
- **Improve business service performance** by aligning file transfers with related application and data workflows
- **Provide instant visibility** into file transfer status
- **Ensure data integrity** with support for multiple file transfer protocols and Federal Information Processing Standards (FIPS) compliance



— Provide instant visibility into file transfers with a customizable file transfer dashboard.

Managed File Transfer

File transfer and business service alignment: Business services that include both file transfer and related non-file transfer application and data workflows can be monitored and managed in a single interface. As workflows run, the business service status updates automatically and eliminates the need for manual intervention or the complicated scripting required to integrate file transfers with related non-file transfer workflows. This improves business service performance for the enterprise.

Transfer files securely: File transfers can be secured via secure file transfer protocol (SFTP) using Secure Shell (SSH) Key and/or password authentication, FTP over Secure Sockets Layer (SSL), or Pretty Good Privacy (PGP) encryption, while also being FIPS compliant.

Cloud integration: Files can be transferred with Amazon S3 (including Amazon Web Services (AWS) Private Link connections), Azure Storage (Blob Storage and Data Lake Storage Gen2), Google Cloud Storage, and Oracle Cloud Infrastructure Object Storage.

Automatic recovery: When network failures or outages cause a file transfer to fail you can automatically recover and restart the failed transfer from the point of failure or from the beginning.

Built-in File Transfer Server: Eliminate the need to use third-party FTP servers. The File Transfer Server supports secured transfer and authentication and can be configured and managed from the central configuration interface. To accommodate enterprise requirements, you can limit access to the File Transfer Server with an allowed/blocked users list.

Centralized configuration: Authorized users can deploy and upgrade File Transfer Servers on every end point from a centralized configuration interface.

File Transfer Server website: Web-based interface for Control-M users to access the File Transfer Server and upload/download files for ad-hoc transfers.

Advanced capabilities: Directory listing allows you to view and archive remote directory content. Directory sync uses file timestamps to synchronize local and remote directories. Incremental transfers move files based on timestamp sorting. If a file already exists on the destination host, you can decide what actions to take, such as creating a copy, thus avoiding errors or unwanted overrides.

Managed File Transfer/Enterprise

Managed File Transfer/Enterprise adds the following components and capabilities:

Managed File Transfer/Enterprise Hub: Located in the secure internal network, allows external users to log in and securely exchange files via assigned virtual folders.

Managed File Transfer/Enterprise Gateway: Installed in the demilitarized zone (DMZ), listens for connection requests coming from external users via SFTP, FTP/S, Applicability Statement 2 (AS2), and the File Exchange Website and proxies them to the Hub.

Managed File Transfer/Enterprise File Exchange website: Empowers external business partners to exchange files with your organization through a web-based interface that can also be branded.

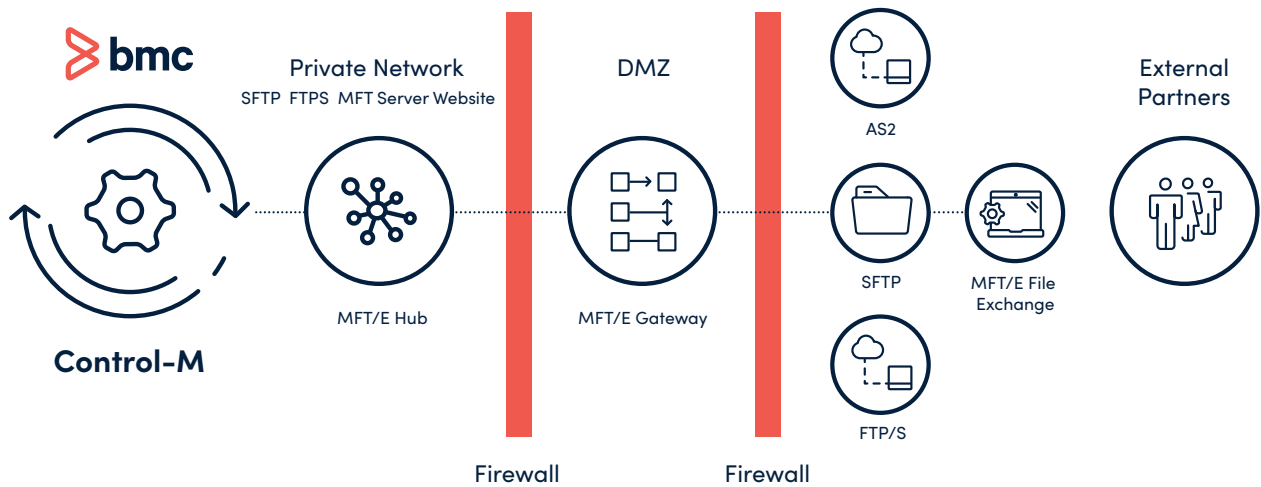
Virtual folders and sub-folders: Transfers inbound and outbound files between internal and external users. Users can set access levels, which enable granular control and ensure compliance with established business processes.

Multi-site support: Accommodates standards and best practices for different sites created by different departments. Each site can have its own users, folders, groups, rules, settings, Hubs, and Gateways.

Processing rules: Defined for both inbound and outbound file transfers, triggers actions in response to specific conditions at specific handoff points.

High availability: Active-active high availability options that ensure files are transferred on time.

Managed File Transfer/Enterprise



FOR MORE INFORMATION

To learn more about how Control-M can help you manage file transfers and related application workflows, visit bmc.com/mft.

About BMC

BMC works with 86% of the Forbes Global 50 and customers and partners around the world to create their future. With our history of innovation, industry-leading automation, operations, and service management solutions, combined with unmatched flexibility, we help organizations free up time and space to become an Autonomous Digital Enterprise that conquers the opportunities ahead.

www.bmc.com



BMC, the BMC logo, and BMC's other product names are the exclusive properties of BMC Software, Inc. or its affiliates, are registered or pending registration with the U.S. Patent and Trademark Office, and may be registered or pending registration in other countries. All other trademarks or registered trademarks are the property of their respective owners. ©Copyright 2024 BMC Software, Inc.

