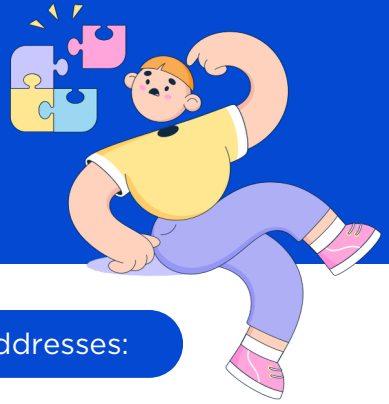


# 3 Problems Hexnode Solves

Hexnode, a Unified Endpoint Management (UEM) tool, offers solutions to several key challenges organizations face in managing and securing their devices and data - especially in diverse and remote work environments.



Here are three common challenges Hexnode addresses:

## 01.

### COMPLEX DEVICE ECOSYSTEM

Managing a diverse fleet of devices across platforms can be complex and time-consuming.

Hexnode simplifies this with:

- Unified console for all device types and OSs
- Location tracking, Kiosk mode, Remote view for better device control
- Automated updates and patch management to reduce vulnerabilities



## 02.

### INCREASED SECURITY RISKS

Remote work and growing use of mobile devices increase the risk of data breaches and compliance issues.

Hexnode strengthens security with:

- Strong password enforcement and device encryption (BitLocker, FileVault)
- Secure VPN and Wi-Fi configurations
- Block unauthorized app installs and perform remote lock and wipe



## 03.

### COMPLIANCE CHALLENGES WITH INDUSTRY REGULATIONS

Meeting standards like GDPR, HIPAA, and FERPA can be challenging across diverse devices and user environments.

Hexnode helps ensure compliance by:

- Protect user privacy with work and personal data containerization
- Control user access with roles and permissions
- Support MFA and SSO for secure authentication

