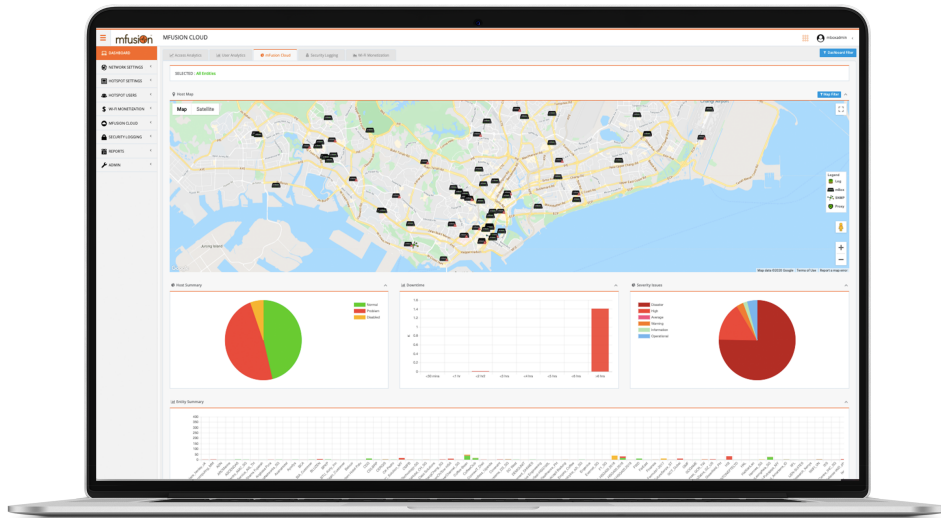


mfusion Monitoring Platform



Overview

With the growing complexity between physical, virtual and cloud infrastructures, network infrastructure complicates as well. As such, businesses are finding it increasingly difficult to have a clear visibility across the entire infrastructure. Having such visibility is critical for all businesses to optimize infrastructure performance, prevent faults to maximize uptime.

mfusion is a cloud-based, enterprise IT infrastructure Monitoring and Management system, designed to provide the in-depth network visibility business needs through a secure and intuitive web-portal. From servers, routers to applications, mfusion is able to pro-actively monitor and present real-time information, reports and automated alerts or notifications based on the threshold configured.

With mfusion's in-depth intelligence and pro-active monitoring of the IT infrastructure, businesses are able to take pre-emptive measures and respond faster to potential faults that is both costly and disruptive to daily operations.

Who need mfusion?

- Providers (ISP/MSP) looking to provide Value-Added-Services to end customers
- All businesses looking to understand the health status and usage of their IT investments
- Mission-critical businesses that need immediate notifications on the uptime status of IT infrastructure

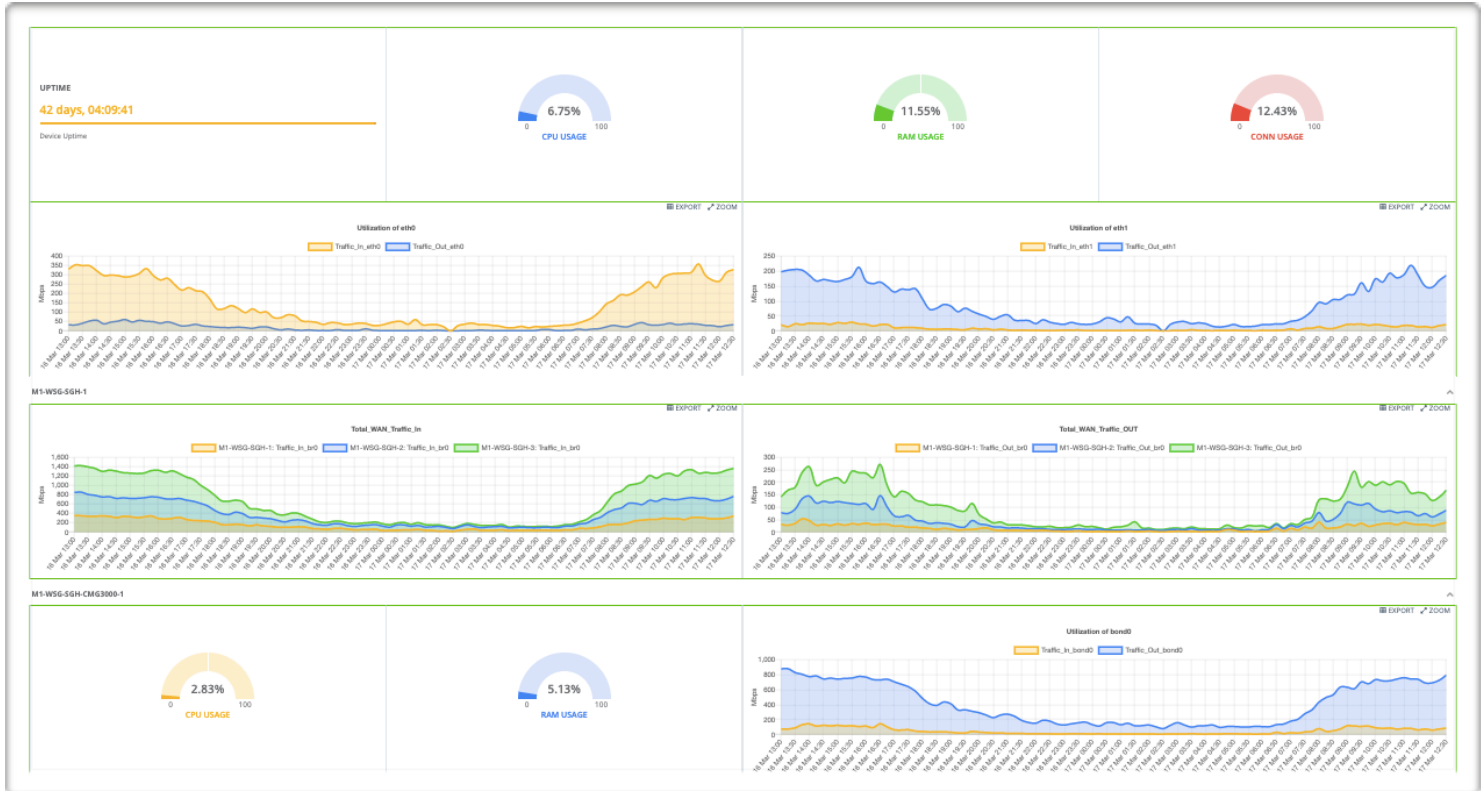
What mfusion does?

- Collects critical infrastructure information in real-time, 24x7
- Presents information in intuitive manner for easy analysis
- Provides access to critical information only to authorized personnel from anytime, anywhere
- Automated system alerts or notifications only to relevant personnel

What's so special about mfusion?

- Quick and easy to deploy to start monitoring
- Multi-tenanted architecture to serve both MSPs and End Users
- Cost savings through OpEx only billing model

Capabilities



Network Monitoring

- Real-time tracking of the availability, performance and health status of network devices, and network resource utilization, such as CPU, memory, port/ interface utilization, SLA, etc.
- Works on Cisco, Microsoft Windows, VMWare, Linux, and potentially any IP & SNMP based devices.

Flexible Alerting Threshold

- Extensive alerting such as status alert (up/down), threshold alert (above/below values), escalation alerts, and dependencies alerts (downstream suppression), via email or SMS (chargeable).

Net Discovery

- Agent-less discovery automatically discovers IP-based devices using SNMP or WMI across a range of IP addresses, and identifies devices components (eg. type, OS, s/n, interfaces).

Scheduled Reports

- Receive daily, weekly or monthly PDF format reports right in the convenience of your mailbox. Presented in a familiar and intuitive format as the online dashboard, administrators are able to easily determine the performance of their network.



	NMS-200	NMS-800	NMS-2000	NMS-5000
Performance				
Processor	Multi-core	Multi-core	Multi-core	Dual CPU
Memory (RAM)	4GB	4GB	32GB	64GB
Storage	250GB SSD	500GB SSD	1TB SSD	2TB SSD
Gigabit Interface	4 x GE	4 x GE	8 x GE	8 x GE
10G Interface (fiber or copper)			Optional	Optional
Network and Security				
Stateful Firewall & DHCP Server	✓	✓	✓	✓
Static, Dynamic Routing (OSPF/BGP)	✓	✓	✓	✓
NAT, PAT, SNAT, DNAT, Port forwarding	✓	✓	✓	✓
IPSec, GRE, SSLVPN, L2TPv3	✓	✓	✓	✓
IPv4 and IPv6 Capable	✓	✓	✓	✓
VLAN, Trunking (802.1q), Bonding	✓	✓	✓	✓
HA w/ Stateful Failover	✓	✓	✓	✓
Captive Portal Features				
Bandwidth Control (Static/Dynamic)	✓	✓	✓	✓
Time/Data/Session/Device Control	✓	✓	✓	✓
Whitelist by URL/Domain/IP/MAC	✓	✓	✓	✓
Local Authentication (RADIUS)	✓	✓	✓	✓
PMS/API/payment gateway integration	✓	✓	✓	✓
User log and data Analytics	✓	✓	✓	✓
Management & Monitoring				
Wireless AP management (MACC)	✓	✓	✓	✓
mfusion monitoring & management	✓	✓	✓	✓
Online Firmware Patching and Upgrade	✓	✓	✓	✓
Physical / Environmental Specs				
Dimensions (mm) (WxHxD)	231.9 x 44 x 152	231.9 x 44 x 152	430 x 44 x 450	562 x 88 x 430
Weight	2.5kg	2.5kg	6kg	13kg
Power Consumption	< 18W	< 18W	< 230W	< 420W
Redundant Power Supply			Optional	Included
Design Form Factor	Desktop	Desktop	1U rack	2U rack
Operating Temperature	0°C to 40°C	0°C to 40°C	0°C to 40°C	0°C to 40°C
Certifications	FCC/CE/ROHS			