



## Innovative workplace interiors

SketchUp balances creativity and technical accuracy with ease-of-use;  
focus on innovative space design, not learning complex software.

<https://www.wordtext.com.ph/products/sketchup/>



## Your toolkit for great design

SketchUp enables teams to quickly design and collaborate on creative, functional, and productive workplace interiors. Don't compromise on innovation, precision, and accuracy.



### **Intuitive 3D modeler**

SketchUp is an easy-to-use 3D drawing application, designed to help you deliver impactful, accurate and professional projects quickly.



### **Tell the whole story**

Combine 3D models with 2D annotations and drawings to deliver comprehensive presentations and construction documentation in LayOut.



### **Real or render?**

Select from a range of tools and extensions to deliver functional 2D plans to stunning photo-realistic walkthroughs and everything between.



### **Reporting made easy**

Data-enriched models make specification, estimation, and reporting a breeze. Utilize standards, such as, IFC or import attributes that matter to you.



### **Real-world products**

Quickly populate designs with real-world products from 3D Warehouse. Source models from known brands including Steelcase and Herman Miller.



### **Mixed reality**

Visual projects deserve visual explanations. Blow clients away with immersive AR/VR by touring models at 1:1 scale, and get instant feedback.





## BWBR & Aldevron

From its inception as a two-person startup manufacturing plasmid DNA to currently navigating the build out of it's 14-acre campus, Aldevron has relied on SketchUp for many of its architectural and design projects.

**Full case study [here](#).**

<https://www.wordtext.com.ph/products/sketchup/>

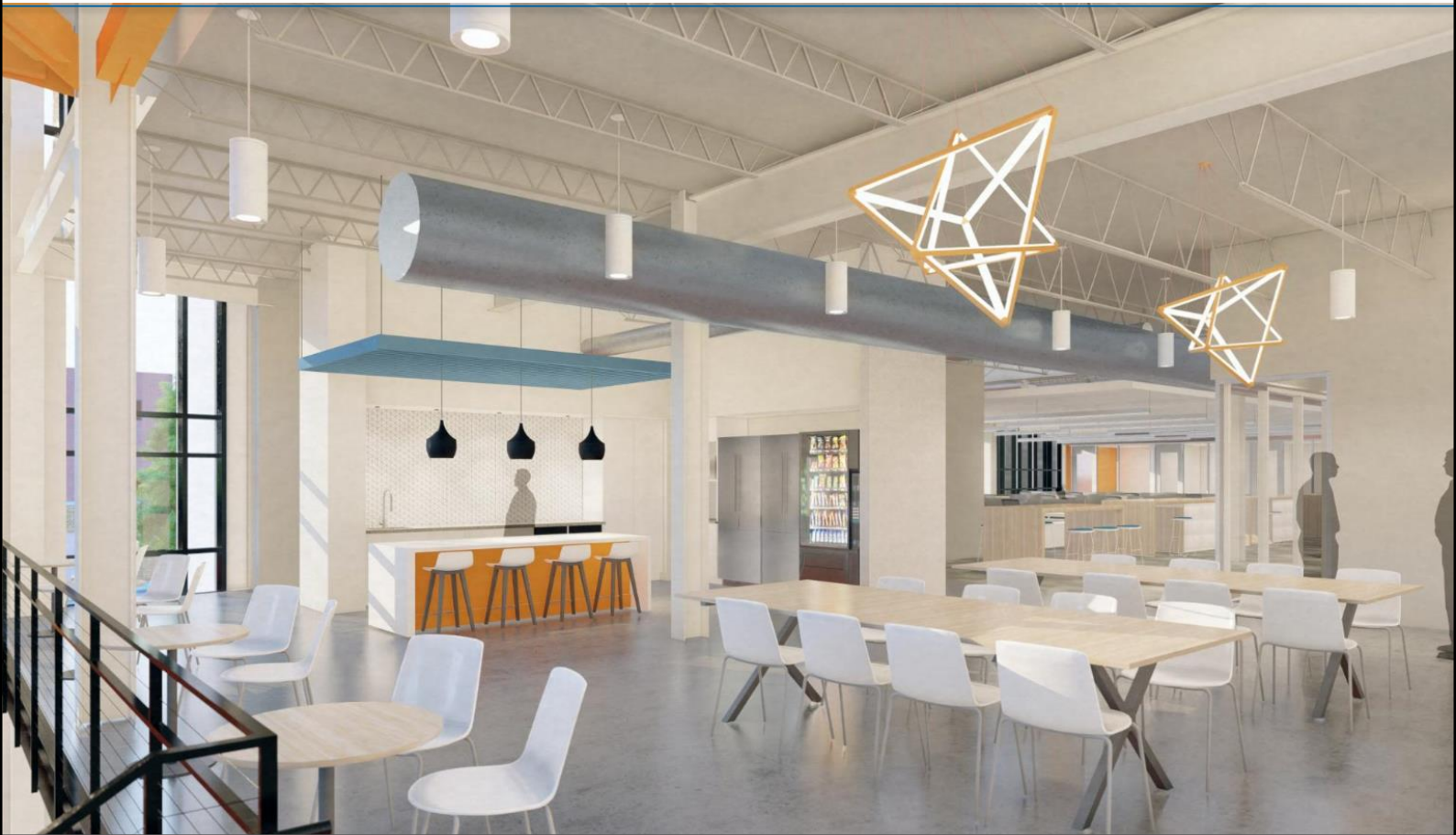
### Aldevron Corporate Campus

**Location:** Fargo, North Dakota

**Project type:** Live-work

**Project area:** 14 Acres

**Status:** Completed



## Aldevron Campus

Collaborating in SketchUp to deliver a 14-Acre Campus for biological science firm, Aldevron

“

**SketchUp helped us swiftly prototype spaces within the building and iterate on the fly. From the start, being able to measure accurately and visualize the space in 3D was invaluable. This enabled us to get our internal clients — the scientists — on board with any changes.**

3D Warehouse provides so much value as it saves us a ton of time modeling things like furniture and lighting from scratch.

**Our team has always used SketchUp as our primary design tool thanks to the flexibility, ease, and speed it affords us. We've tried other software but found them too cumbersome — especially for conceptual design.**

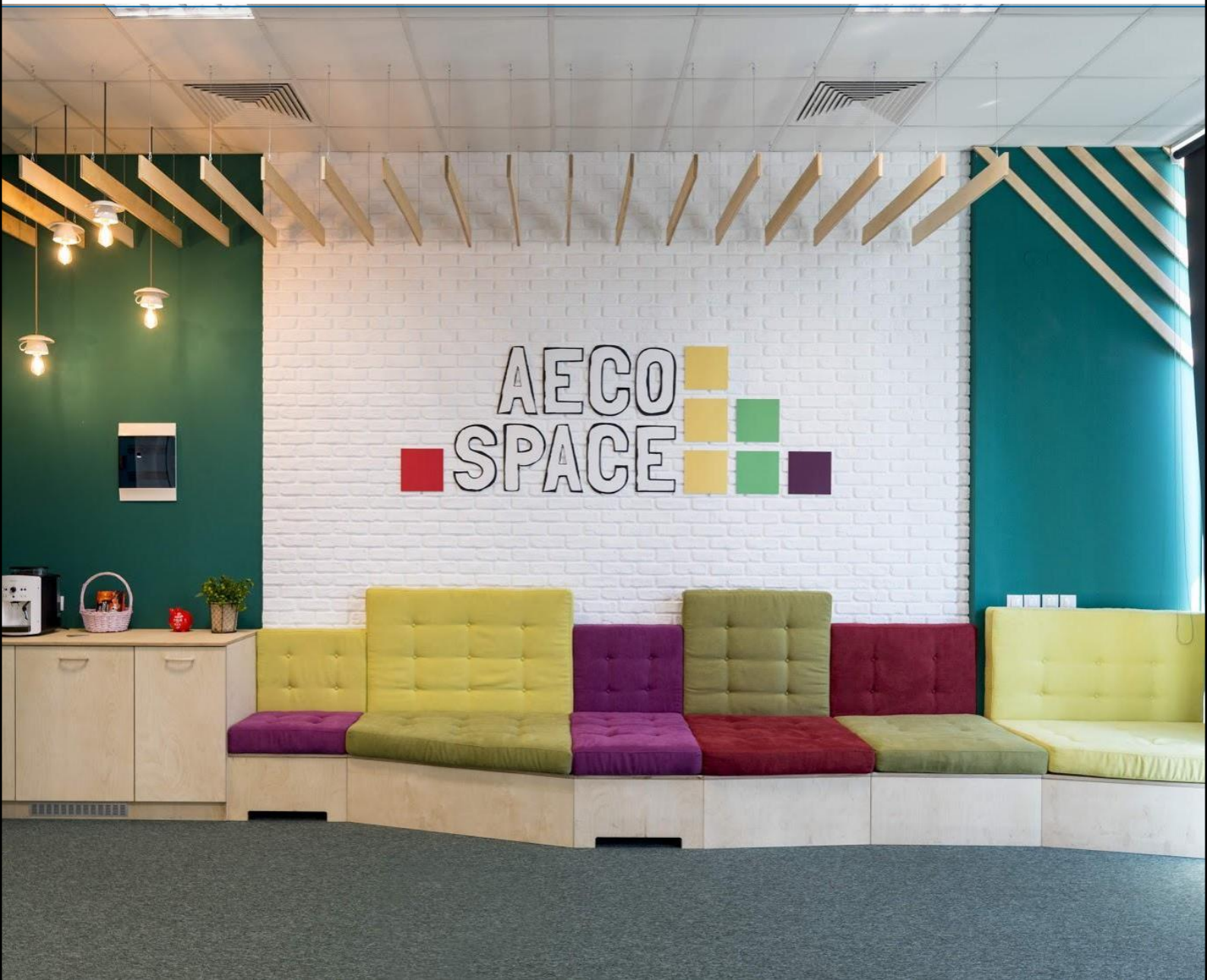
**Matt Chambers**

Lead strategist at Aldevron

**Chris Fischer**

Lead architect at BWBR





## 3DEA Bulgaria

3DEA helps companies to express their ethos, brand and visual identity within their interiors. They also create expo and stand design and signage. A key theme that runs through their projects is the combination of good design and buildability.

**Full case study [here](#).**

<https://www.wordtext.com.ph/products/sketchup/>

## Aeco Space Offices

**Location:** Bulgaria

**Project type:** Workplace interior

**Status:** Completed



## Aeco Space Offices

Designing and delivering a functional, flexible, and creative work space.

“

**SketchUp is our Swiss Army knife that equips us to do all these tasks at different scales consistently well.**

Even without creating photorealistic renderings, SketchUp helps us to get the client excited about the concept. Then we focus on fascinating the client with the finished product.

**SketchUp enables us to generate images for client review, comments and approval, and technical 3D drawings and details that focus on accuracy to ensure buildability.** Our models are data-enriched because that helps us with estimation and specification.

We pull area and linear measurements from SketchUp's Entity Info tab into Excel and use formulas to provide quick estimates for projects. **When the budget, specification or price changes, updated results can be generated very quickly.**

**Ivan Borov**

Founder | 3DEA Bulgaria