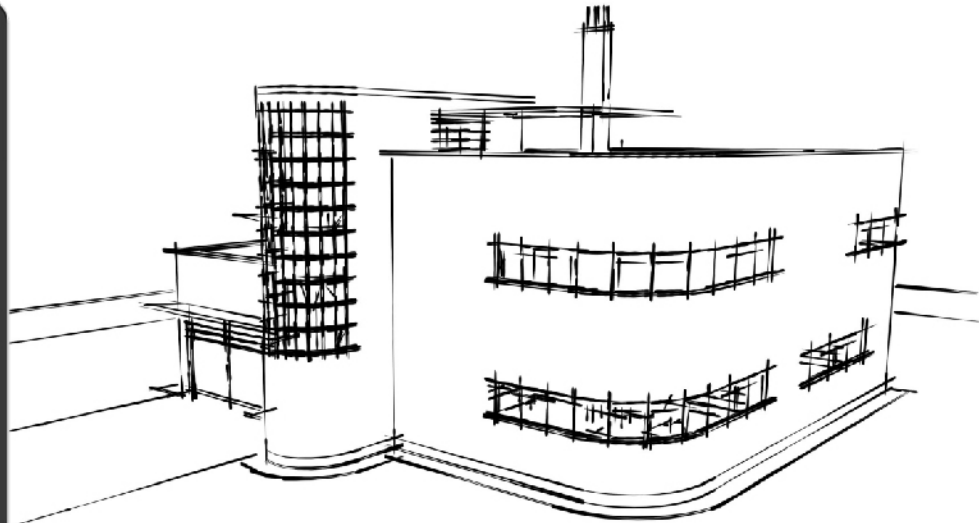
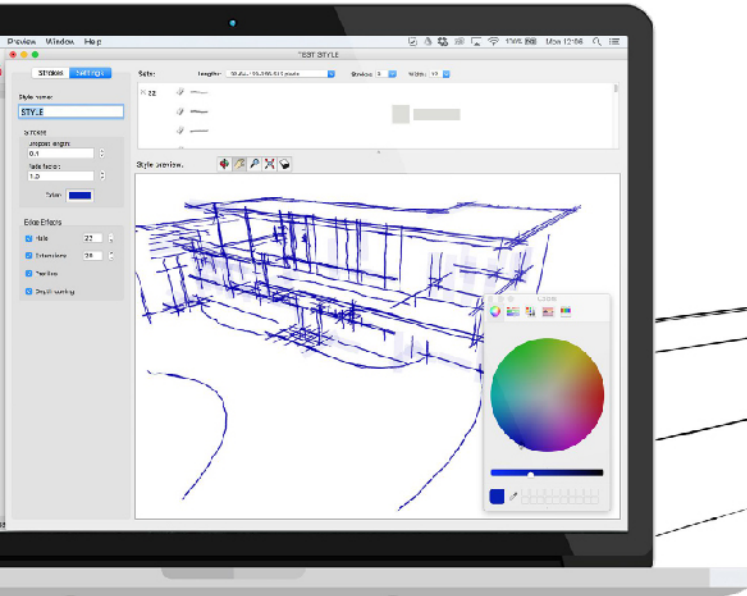




Style Builder – part of the SketchUp Pro suite – allows you to add a personal touch to your projects with custom edge styles created from lines you've drawn yourself, either on paper or digitally in an image-editing program.



Develop your own style

Style Builder is a lightweight application that installs with SketchUp Pro; locate it in your device's applications folder. The simple interface allows you to quickly create personalized line styles for use directly in SketchUp.

Flexible tools

Style Builder allows you to import your own strokes from hand drawings or from image editing software. Customize the style further by adjusting dropout length, fade factor, halo, stroke extensions and depth cueing.

Consistency is key

Generating a custom style allows you to apply consistency across all your outputs or to emulate your hand drawn style. Styles can also be used by a team to maintain coherence across all elements of a collaborative project.

Styles for the community

Style Builder styles can be easily imported into SketchUp Pro for the instant creation of personalized imagery. They can be kept for private use, or shared for the entire SketchUp community to benefit from.

Get started now. Contact us through the information below.

