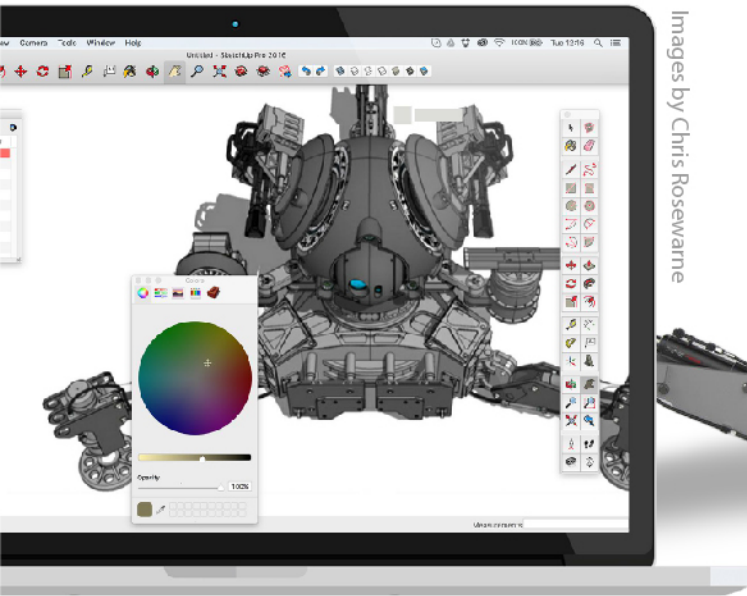
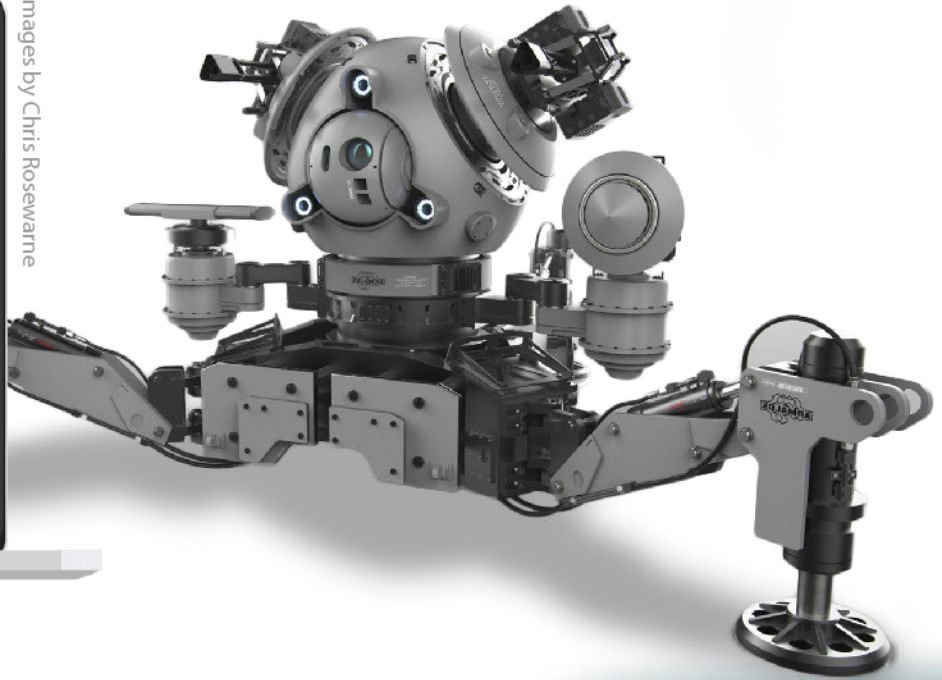




With over 33m annual activations, SketchUp Pro is the world's most popular 3D modeling tool. It's both quick and intuitive, so anyone can create and collaborate on gaming projects, from the conceptual design stage to complex map layouts.



Images by Chris Rosewarne



Design at Pace

Designing in SketchUp is fast and introduces 3D modeling into the concept art stage, for real design decisions from the start. Scenes, objects and materials can be drawn quickly or imported from 3D Warehouse.

Powerful and Intuitive

SketchUp is the easiest way to design in 3D, featuring powerful and accurate, yet simple tools to rapidly progress your project. Usability is a primary focus and our community is there to support you throughout.

Export and Share

Publish photo-realistic images, flythrough animations and comprehensive documentation or continue to develop your work in third-party software applications by exporting to a wide range of 2D and 3D file formats.

Real-time AR and VR design

The Extension Warehouse contains plugins for design and presentation using Augmented Reality (AR) and Virtual Reality (VR) hardware, including Google Cardboard, Samsung Gear, Microsoft HoloLens and Oculus Rift.

Get started now. Contact us through the information below.

